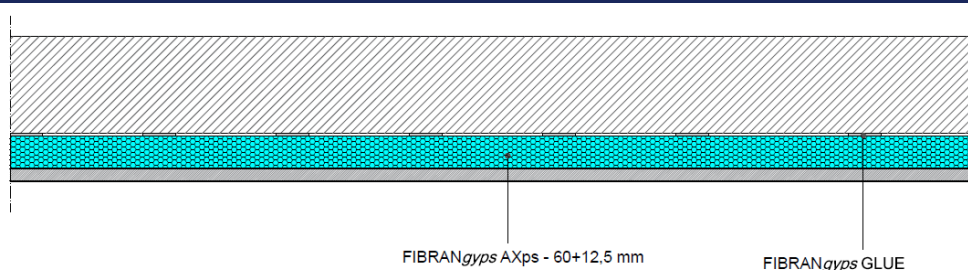


Lining FIBRAN LW AXps 13+60

Drywall lining- thickness 13+60 mm



COMPONENTS

Plasterboards

1 layer of **FIBRANgyps AXps** conform to EN 13950, fire reaction B-s1,d0 according to EN 13501-1. It consists of 1 layer of FIBRANgyps A CE marked- **type A** according to EN 520, classified **A+** according to EN ISO 16000-09, fire reaction **A2-s1,d0** according to EN 13501-1, weight 9,2 kg/m², water vapor resistance factor $\mu=10$, thermal conductivity $\lambda=0,25$ W/m K and specific heat $c_p=1,03$ kJ/kg K according to EN 10456 and 1 FIBRANxps, extruded polystyrene panel, density **100 kg/m³**, thickness **60 mm**, thermal conductivity 10°C $\lambda_p=0,032 - 0,032$ W/m K according to EN 12667 and EN 12939, water vapour diffusion resistance factor $\mu=100$ according to EN 12086, specific heat capacity $c_p=1,4$ kJ / kg K according to EN 10456

Fixing to the existing wall

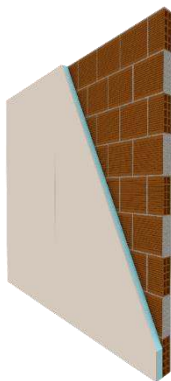
Fixing to the existing wall with FIBRANgyps GLUE stripes and plots spaced about 40 cm.

Adhesive tape and joint filler

Treatment of the joints between plasterboards and head of screws with **FIBRANgyps JF**, CE marked 3B according to EN 13963, and reinforcing tape **FIBRANgyps TAPE** according to the level quality Q2 (Eurogypsum)

Lining FIBRAN LW AXps 13+60 mw

Technical features



Thermal Insulation

U = 0,46 W/m²K – calculated with software – with a perforated brick th. 80 mm plastered each side

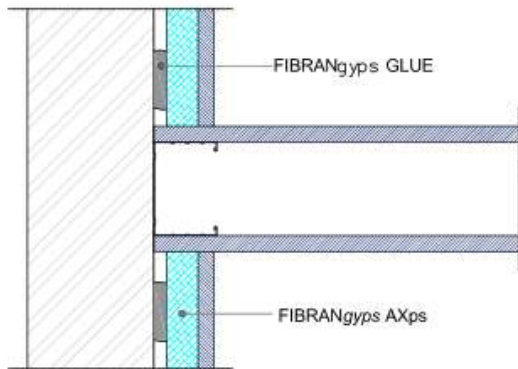
Finishing

According to quality level required (Eurogypsum). Use FIBRANgyps JF READY MIX for level Q4

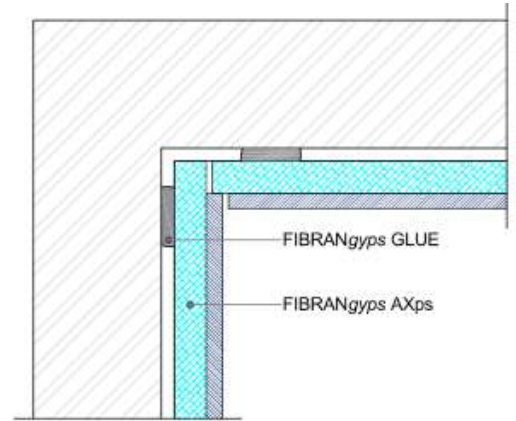
Sustainability

FIBRANgyps plasterboards are classified A+, the best one according to EN ISO 16000-09, with regards to the emission of formaldehyde, acetaldehyde and other substances

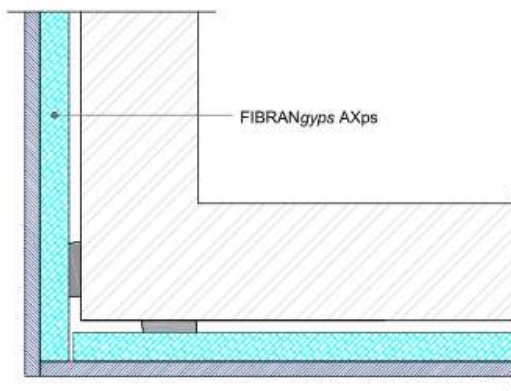
Lining FIBRAN LW AXps 13+60 Construction details



Detail. 1 **WALL INTERSECTION**



Detail. 2 **INTERNAL CORNER FITTING**


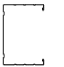





Detail. 3 **EXTERNAL CORNER FITTING**

Lining FIBRAN LW AXps 13+60

Quantities of material

Indicative quantities for square meter of lining

		quantity/m ²		quantity/m ²	
		centre 600 mm		centre 400 mm	
Description	UM				
FIBRANgyps AXps	m ²	1,05	1,05	1,05	1,05
Joint filler FIBRANgyps JF	kg	0,35	0,35	0,35	0,35
FIBRANgyps GLUE	kg	2,80	2,80	2,80	2,80
FIBRANgyps TAPE	m	1,67	1,67	1,67	1,67