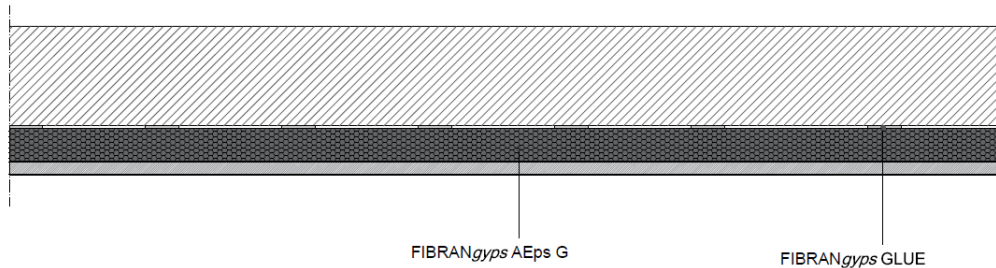


# Lining FIBRAN LW AEps G

Drywall lining - thickness variable



## COMPONENTS

### Plasterboards

1 layer of **FIBRANGyps AEps G** conform to EN 13950, fire reaction B-s1,d0 according to EN 13501-1. It consists of 1 layer of FIBRANGyps A, th. 9,5 mm CE marked– **type A** according to EN 520, classified **A+** according to EN ISO 16000-09, fire reaction **A2-s1,d0** according to EN 13501-1, weight 7,7 kg/m<sup>2</sup>, water vapor resistance factor  $\mu=10$ , thermal conductivity  $\lambda=0,25$  W/m K and specific heat  $cp=1,03$  kJ/kg K according to EN 10456 and black expanded polystyrene panel of variable thickness, thermal conductivity  $\lambda_p=0,031$  W/m K according to EN 12667 and EN 12939, water vapour diffusion resistance factor  $\mu=50$  according to EN 12086, specific heat capacity  $cp=1,45$  kJ / kg K according to EN 12524

### Fixing to the existing wall

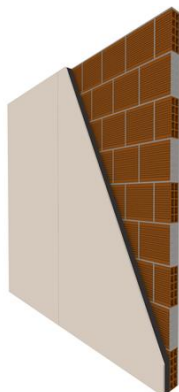
Fixing to the existing wall with FIBRANGyps GLUE stripes and plots spaced about 40 cm.

### Adhesive tape and joint filler

Treatment of the joints between plasterboards and head of screws with **FIBRANGyps JF**, CE marked 3B according to EN 13963, and reinforcing tape **FIBRANGyps TAPE** according to the level quality Q2 (Eurogypsum)

# Partition FIBRAN LW AEps G

## Technical features



### Thermal Insulation

**U = 0,33** W/m<sup>2</sup>K – calculated with software – with 1 layer of FIBRANGyps AEps G 10+80 mm and perforated brick th. 80 mm plastered each side

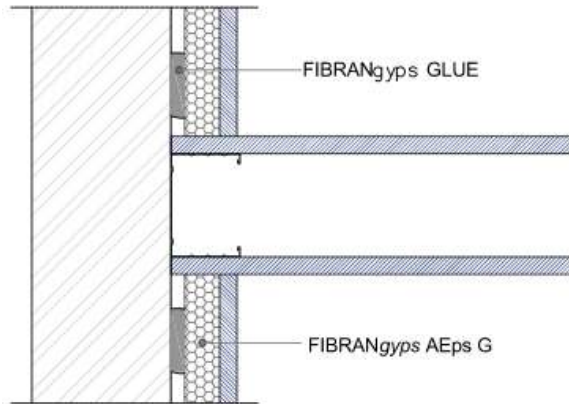
### Finishing

According to quality level required (Eurogypsum). Use FIBRANGyps JF READY MIX for level Q4

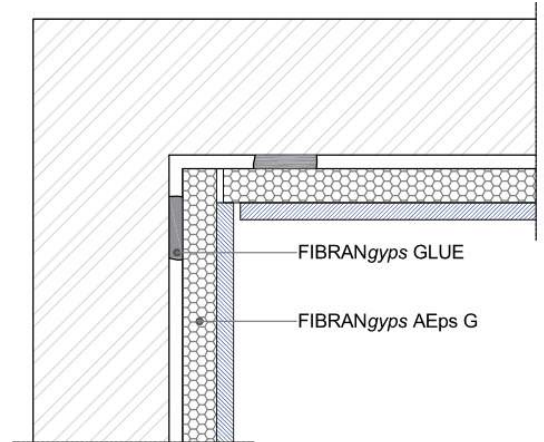
### Sustainability

FIBRANGyps plasterboards are classified A+, the best one according to EN ISO 16000-09, with regards to the emission of formaldehyde, acetaldehyde and other substances

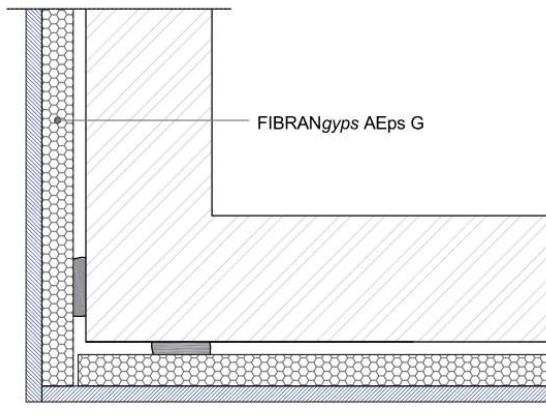
# Lining FIBRAN LW AEps G Construction details



Detail. 1 **WALL INTERSECTION**



Detail. 2 **INTERNAL CORNER FITTING**


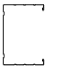





Detail. 3 **EXTERNAL CORNER FITTING**

# Lining FIBRAN LW AEps G

## Quantities of material

### Indicative quantities for square meter of partition

		quantity/m <sup>2</sup>		quantity/m <sup>2</sup>	
		centre 600 mm		centre 400 mm	
Description	UM				
FIBRANgyps AEps G	m <sup>2</sup>	1,05	1,05	1,05	1,05
Joint filler FIBRANgyps <b>JF</b>	kg	0,35	0,35	0,35	0,35
FIBRANgyps GLUE	kg	2,80	2,80	2,80	2,80
FIBRANgyps <b>TAPE</b>	m	1,67	1,67	1,67	1,67