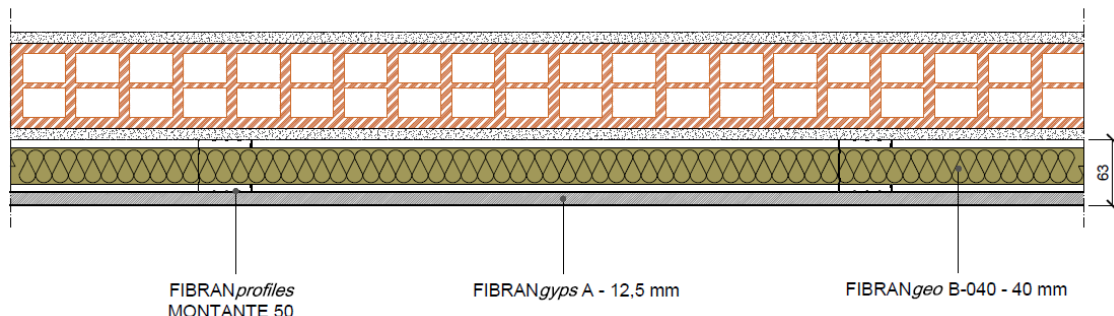


# Lining FIBRAN LW 63/50 mw

Drywall lining -  $R_w = 55$  dB - thickness 63 mm



## COMPONENTS

### Plasterboards

1 layers of **FIBRANGyps A**, thickness **12,5 mm**, CE marked– **type A** according to EN 520, classified **A+** according to EN ISO 16000-09, fire reaction **A2-s1,d0** according to EN 13501-1, weight 9,2 kg/m<sup>2</sup>, water vapor resistance factor  $\mu=10$ , thermal conductivity  $\lambda=0,25$  W/m K and specific heat  $c_p=1,03$  kJ/kg K according to EN 10456

### Metal frame thickness 0,6 mm conform to EN 14195

Channels **FIBRANprofiles GUIDA 50** mechanically fixed to the floor and ceiling using fixing nails at a maximum spacing of 500 mm;

Studs **FIBRANprofiles MONTANTE 50**, max axial spacing every 600 mm, slotted to allow passage of the installations

### Insulation board in cavity

**FIBRANGeop B-040**, biosoluble stone wool board, density **40 kg/m<sup>3</sup>**, thickness **40 mm**, fire reaction A1 according to EN 13501-1, thermal conductivity 10°C  $\lambda_D = 0,034$  W/m K according to EN 12667 and EN 12939, water vapour diffusion resistance factor  $\mu = 1$  according to EN 12086, specific heat capacity  $c_p=1,03$  kJ / kg K according to EN 10456

### Screws

Self-drilling screws **FIBRANGyps SCREW 3,5 x 25 mm** with resistance in salt spray test not less than 72 hours, fixed max 300 mm each

### Adhesive tape and joint filler

Closed cell polyethylene foam adhesive tape **FIBRANGyps** to be applied on the entire perimeter of the metal structure, to eliminate the possible acoustic bridges due to the transmission of noise through the building structures.

Treatment of the joints between plasterboards and head of screws with **FIBRANGyps JF**, CE marked 3B according to EN 13963, and reinforcing tape **FIBRANGyps TAPE** according to the level quality Q2 (Eurogypsum)

# Lining FIBRAN LW 63/50 mw

## Technical features

### Acoustics

**Rw = 55 dB** – test report Istituto Giordano n° 325020

### Thermal Insulation

**U = 0,59 W/m<sup>2</sup>K** – calculated with software

### Mechanical performance

**FIBRANprofiles** channels and studs DIN 50 mm, max axial spacing every 600 mm, thickness 6/10 mm conform to EN 14195.

Profiles must be designed according to local regulation and specific application.

In case of walls longer than 15 meters, an expansion joint must be made every 10 meters or at structural joints

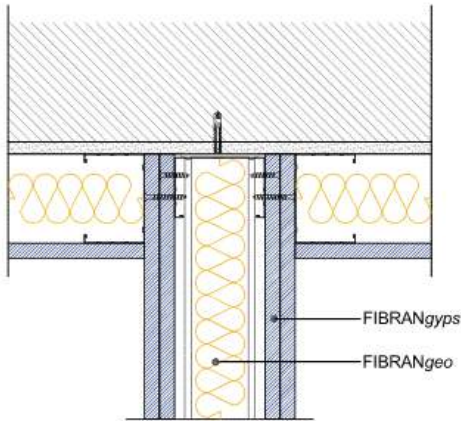
### Finishing

According to quality level required (Eurogypsum). Use FIBRANGyps JF READY MIX for level Q4

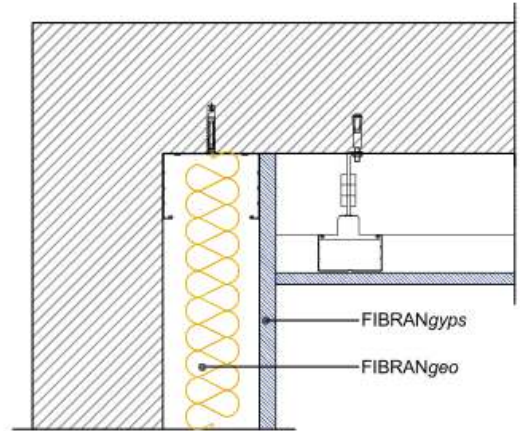
### Sustainability

FIBRANGyps plasterboards are classified A+, the best one according to EN ISO 16000-09, with regards to the emission of formaldehyde, acetaldehyde and other substances

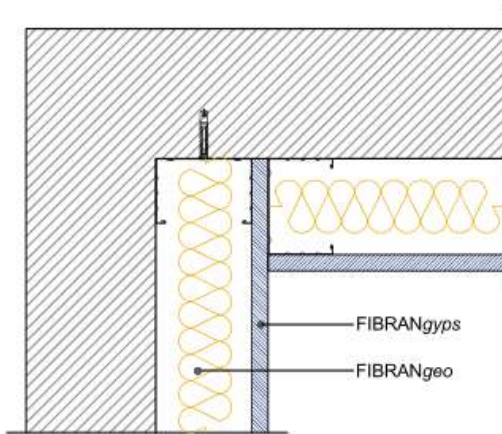
# Lining FIBRAN LW 63/50 mw Construction details



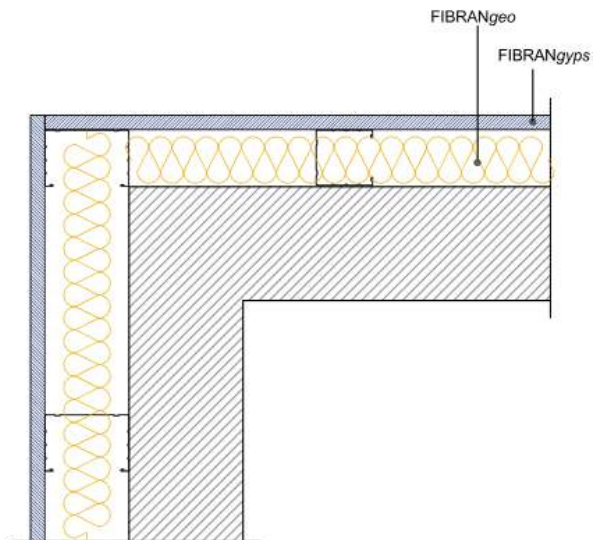
Detail. 1 **WALL INTERSECTION**



Detail. 2 **CEILING WALL INTERSECTION**



Detail. 3 **INTERNAL CORNER FITTING**



Detail. 4 **EXTERNAL CORNER FITTING**

# Lining FIBRAN LW 63/50 mw

## Quantities of material

### Indicative quantities for square meter of lining

|  |                | quantity/m <sup>2</sup>   |  | quantity/m <sup>2</sup>   |   |
|---|----------------|---|--|---|---|
|   |                | centre 600 mm   |  | centre 400 mm   |   |
| Description   | UM             |  |  |  |  |
| FIBRAN <i>gy</i> ps   | m <sup>2</sup> | 1,05  | 1,05   | 1,05  | 1,05  |
| FIBRAN <i>profiles</i> studs  | m              | 2   | 4  | 2,6   | 5,2   |
| FIBRAN <i>profiles</i> channels   | m              | 0,7   | 0,7  | 0,7   | 0,7   |
| FIBRAN <i>geo</i>   | m <sup>2</sup> | 1,05  | 1,05   | 1,05  | 1,05  |
| Joint filler FIBRAN <i>gy</i> ps <b>JF</b>  | kg             | 0,7   | 0,7  | 0,7   | 0,7   |
| Adhesive tape FIBRAN <i>profiles</i>  | m              | 1   | 1  | 1   | 1   |
| FIBRAN <i>gy</i> ps <b>TAPE</b>   | m              | 1,67  | 1,67   | 1,67  | 1,67  |
| FIBRAN <i>gy</i> ps <b>SCREW</b> 25mm   | pz             | 25  | 25   | 30  | 30  |