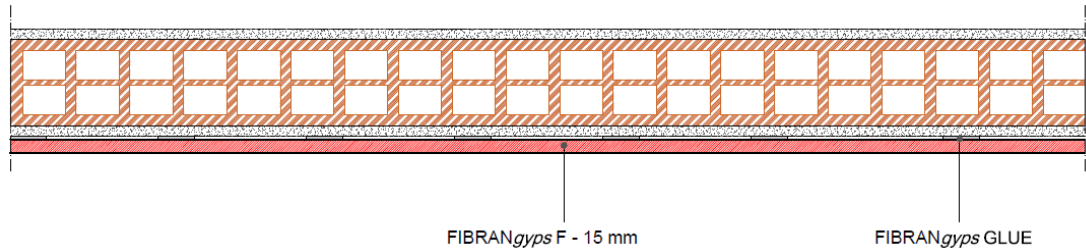


Lining FIBRAN LW-F EI120

Brick wall protection EI = 120 - thickness 15 mm



COMPONENTS

Plasterboards

1 layers of **FIBRANGyps F**, thickness **15 mm**, CE marked– **type F** according to EN 520, classified **A+** according to EN ISO 16000-09, fire reaction **A2-s1, d0** according to EN 13501-1, weight 13,1 kg/m², water vapor resistance factor $\mu=10$, thermal conductivity $\lambda=0,25$ W/m K and specific heat $c_p=1,03$ kJ/kg K according to UNI EN 10456

Fixing to the existing wall

Fixing to the existing wall, a perforated brick size 80 mm with 10 mm of plaster on each sides, with FIBRANGyps GLUE stripes and plots spaced about 40 cm in horizontal and 30 cm in vertical.

Mechanical fixing with expansion metal dowel with a minimum diameter of 8 mm, centre 550 mm

Adhesive tape and joint filler

Treatment of the joints between plasterboards and head of screws with **FIBRANGyps JF**, CE marked 3B according to EN 13963, and reinforcing tape **FIBRANGyps TAPE** according to the level quality Q2 (Eurogypsum)

Lining FIBRAN LW-F EI120

Technical features

Fire rating

Fire rating: **EI 120** (Classification Report CSI 1657 FR according to EN 1364-1)

Max height: 4 m

Finishing

According to quality level required (Eurogypsum). Use FIBRANGyps JF READY MIX for level Q4






Sustainability

FIBRANGyps plasterboards are classified A+, the best one according to EN ISO 16000-09, with regards to the emission of formaldehyde, acetaldehyde and other substances

Lining FIBRAN LW –F EI120

Quantities of material

Indicative quantities for square meter of lining

|  | | quantity/m ² | | quantity/m ² | |
|---|----------------|---|--|---|---|
| | | centre 600 mm | | centre 400 mm | |
| Description | UM |  |  |  |  |
| FIBRANgyps | m ² | 1,05 | 1,05 | 1,05 | 1,05 |
| Joint filler FIBRANgyps JF | kg | 0,35 | 0,35 | 0,35 | 0,35 |
| FIBRANgyps GLUE | kg | 2,80 | 2,80 | 2,80 | 2,80 |
| FIBRANgyps TAPE | m | 1,67 | 1,67 | 1,67 | 1,67 |