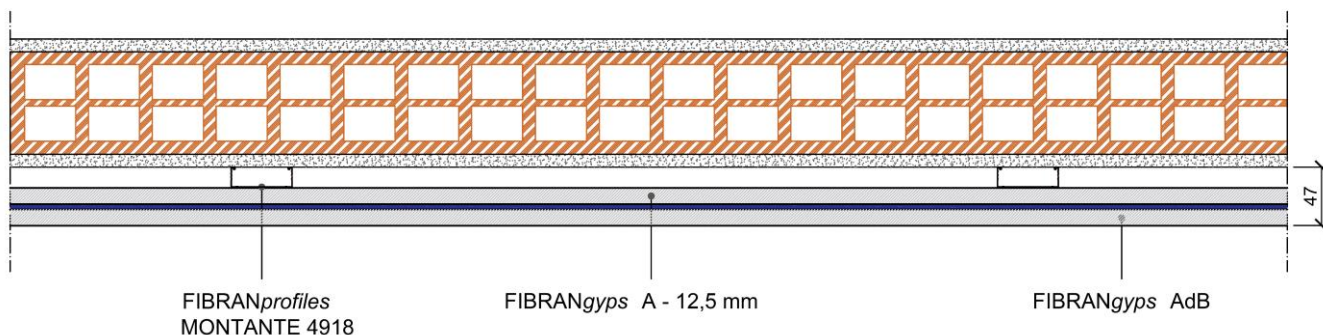


Lining FIBRAN LW AdB 47/18

Drywall lining, R_w 54 dB, thickness 47 mm



Plasterboards

1 layer (outer) of a composite board **FIBRANGyeps AdB**, CE marked according to EN 14190, fire reaction B-s1,d0 according to EN 13501-1, thickness 14,5 mm and weight 13,0 kg/m², consisting of a blue colour **EPDM** membrane, thickness 2 mm and weight 4,0 kg/m², water vapor resistance factor $\mu=6.000$, thermal conductivity $\lambda=0,25$ W/mK and specific heat $c_p=1$ kJ/kgK according to EN 10456, coupled to a plasterboard **FIBRANGyeps A 13** thickness 12,5 mm, CE marked– type A according to EN 520, weight 9,0 kg/m².

1 layer of a plasterboard **FIBRANGyeps A 13**, thickness 12,5 mm, CE marked– type A according to EN 520, classified A+ according to EN ISO 16000-09, fire reaction A2-s1,d0 according to EN 13501-1, weight 9,0 kg/m², water vapor resistance factor $\mu=10$, thermal conductivity $\lambda=0,21$ W/mK and specific heat $c_p=1,03$ kJ/kgK according to EN 10456.

Metal frame thickness 0,6 mm conform to EN 14195

Channels **FIBRANprofiles GUIDA 4918 thickness 0,6 mm**, web 20 mm depth, mechanically fixed to the floor and ceiling using fixing nails at a maximum spacing of 500 mm;

Studs **FIBRANprofiles MONTANTE 4918 BA thickness 0,6 mm**, max axial spacing every 600 mm

Screws

Self-drilling screws **FIBRANGyeps SCREW 3,5x25** and **3,5x45** mm with resistance in salt spray fog test not less than 72 hours, fixed max 350 mm for the inner layer and 250 mm for the outer layer.

Adhesive tape and joint filler

Closed cell polyethylene foam adhesive tape **FIBRANGyeps** to be applied on the entire perimeter of the metal structure, to eliminate the possible acoustic bridges due to the transmission of noise through the building structures.

Treatment of the joints between plasterboards and head of screws with **FIBRANGyeps JF** joint filler CE marked according to EN 13963 and reinforcing tape **FIBRANGyeps**.

Acoustics

$R_w = 54$ dB – theoretical acoustic value calculated with the software ANIT ECHO

Expansion joints

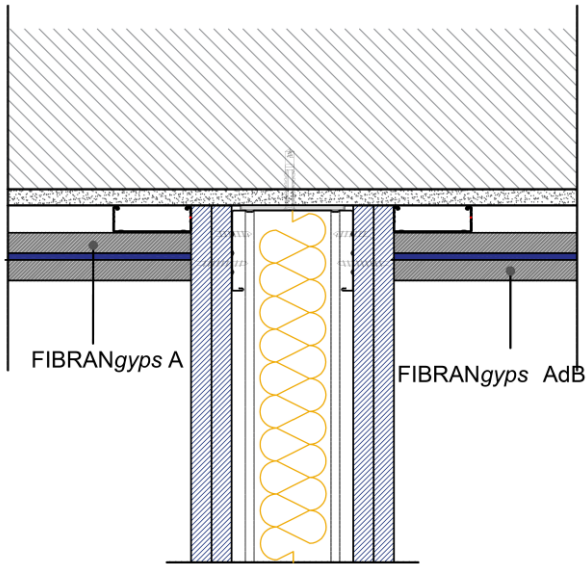
In case of walls longer than 15 meters, an expansion joint must be made every 10 meters and on the structural joints of the building.

Finishing

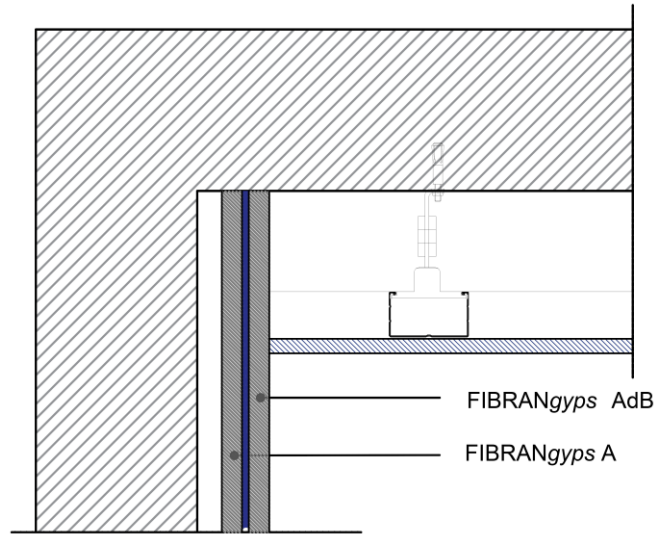
According to the quality level required (Eurogypsum).
Use FIBRANGyeps JF READY MIX for quality level Q4.

Lining FIBRAN LW AdB 47/18

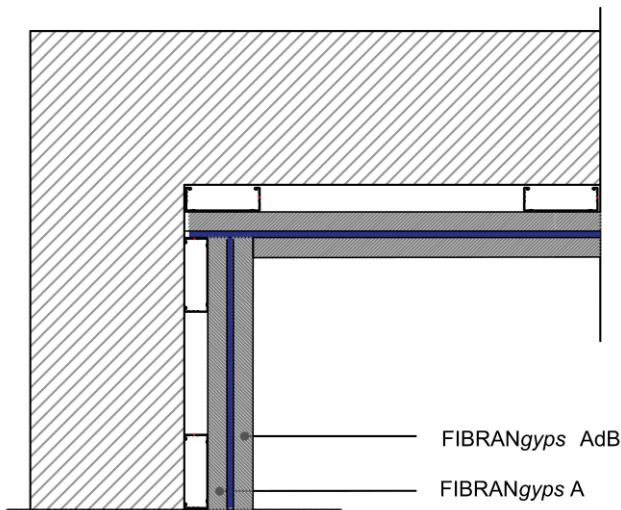
Construction details



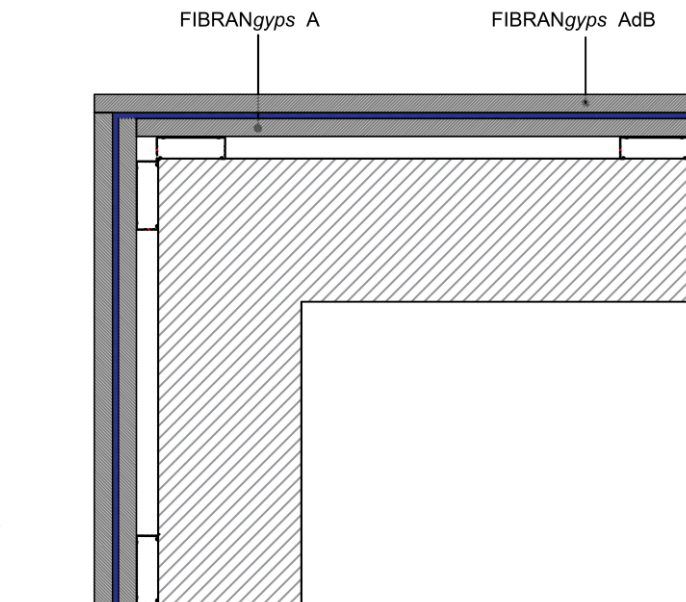
Detail 1 WALL INTERSECTION



Detail 2 CEILING WALL INTERSECTION



Detail 3 INTERNAL CORNER FITTING



Detail 4 EXTERNAL CORNER FITTING

Lining FIBRAN LW AdB 47/18

Quantities of material*

Indicative quantities for square meter of lining - waste 5%		
		quantity/m ²
		centre 600 mm
Description	UM	
FIBRANgy ^{ps} AdB composite board	m ²	1,05
FIBRANgy ^{ps} A 13 board	m ²	1,05
FIBRANprofiles MONTANTE 4918 BA stud	m	2,10
FIBRANprofiles GUIDA 4918 channel	m	0,70
FIBRANgy ^{ps} JF joint filler	kg	0,35
FIBRANgy ^{ps} double-sided adhesive tape	m	1,10
FIBRANgy ^{ps} adhesive fiberglass mesh tape	m	0,75
FIBRANgy ^{ps} SCREW 25 mm centre 350 mm	U	7
FIBRANgy ^{ps} SCREW 45 mm centre 250 mm	U	12
Dowel FIBRAN	U	3
FIBRANgy ^{ps} JF READYMIX drywall finishing	kg	varies with the quality request of the finishing

*Since some quantities depend on the geometry, design and installation of the wall, it is good practice to check the exact quantity. The quantities shown in the table refer to a empty-to-full calculation.

FIBRAN reserves the right to alter or amend technical data without notice.

The information included in this document is correct to the best of our knowledge. Whilst FIBRAN will endeavor to ensure publications are up to date, it is the user's responsibility to check with the company the validity of the information prior to materials' use. For more information visit the website www.fibran.it or contact the Technical Department.

15/03/2021 first draft