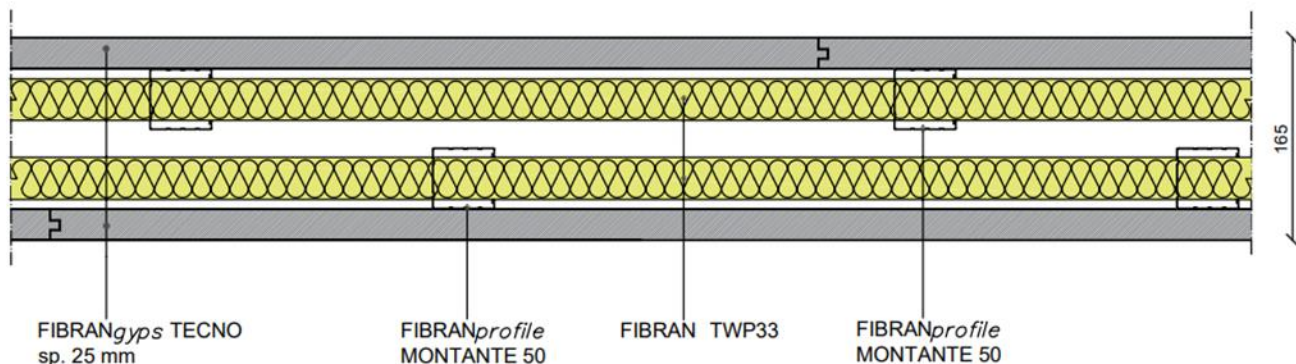


Partition FIBRAN TECNO 165/50P mw

Partition drywall $R_w = 66$ dB - thickness 165 mm



COMPONENTS

Panel

One layer each side of **FIBRANGyps TECNO**, a prefabricated fiber-reinforced gypsum panel, characterized by a male-female joint on the perimeter edges, CE marked according to ETA 22/0087, incombustible **Euroclass A1**. It is recommended to use **FIBRANGyps TECNO H (Hydro)** as a first row.

It must be installed with the special gypsum based glue/finishing **FIBRANGyps FT3** or/and **FT3H**, **FIBRANGyps SCREW**, **FIBRANprofiles** and, if it's the case, **FIBRANprofiles FT1718**.

Metal frame thickness 0,6 mm conform to EN 14195

Double parallel channels **FIBRANprofiles GUIDA 50** mechanically fixed to the floor and ceiling using fixing nails at a maximum spacing of 500 mm;

15 mm air gap;

double parallel staggered studs **FIBRANprofiles MONTANTE 50**, max axial spacing every 600 mm, slotted to allow passage of the installations.

If the wall is mounted on a rough floor, use the **FIBRANprofiles FT 1718** starting profile, 0.7 mm thick, with Z140 zinc plating, mechanically fixed to the metal uprights using **FIBRANGyps TEKS** screws.

Insulation board in cavity

FIBRAN TWP33, glass wool panel covered on one side with a glass veil, placed in a cavity with acoustic and thermal insulation function, density **23kg/m³**, thickness 50mm, with fire reaction class A1 according to UNI EN13501-1, conductivity thermal declared at 10°C **$\lambda_D = 0.033$ W/mK** according to UNI EN 12667 and UNI EN 12939, resistance to water vapor diffusion $\mu=1$ according to UNIEN12086, specific heat $cp=1.03$ kJ/kgK according to EN10456.

Screws

Fixing the panels with phosphated self-tapping **FIBRANGyps SCREW 3.5x45** mm with resistance to salt spray not less than 72 hours, placed at a maximum center distance of 300 mm.

Fix the starting profile **FT 1718** (when necessary) and the uprights to the floor guide with screws **FIBRANGyps TEKS 4.2x13** mm.

Partition FIBRAN TECNO 165/50P mw

Technical features

Tapes and glue / smoothing compound

Double-sided closed cell polyethylene foam tape FIBRANgyps 3.5 mm thickness to be applied on the entire perimeter of the metal structure, in order to eliminate any acoustic bridges.

Mono-adhesive closed cell polyethylene foam tape **FIBRANgyps FT mono**, 2 mm thick and 40 mm wide, to be applied on the wings of the uprights before laying the panels.

Bonding of FIBRANgyps TECNO panel joints using **FIBRANgyps FT3 or FT3H** glue - smoothing compound.

Finishing of the joints, the screw heads and the surface of the panels with the glue - smoothing compound **FIBRANgyps FT3 or FT3H**.

Acoustics

Rw = 66 dB – ZETA LAB test report n°207-2017-IAP.

Mechanical performance

FIBRANprofiles channels and studs DIN 50 mm, max axial spacing every 600 mm, thickness 6/10 mm conform to EN 14195.

Profiles must be always designed according to local regulation and specific application.

In case of walls longer than 15 meters, an expansion joint must be made every 10 meters or at structural joints.

Sustainability

FIBRANgyps TECNO and **TECNO H** are classified A+, the best one according to EN ISO 16000-09, with regards to the emission of formaldehyde, acetaldehyde and other substances

FIBRAN S.p.A. reserves the right to modify or change the technical data, instructions and advice contained in this document without notice. It is the Customer's responsibility to verify that the technical information is suitable for the specific intended use. For more technical information, visit the website www.fibran.it or the Technical Office.

24/03/2023